

## Lake Shirley Improvement Corporation (LSIC)



P.O. Box 567  
Shirley, MA 01464

Welcome, New Lake Neighbor(s)!

Congratulations on the purchase of your new home. On behalf of the Lake Shirley Improvement Corporation (LSIC), we would like to welcome you to Lake Shirley. Over the coming months, we look forward to meeting you whether it be out on the lake, walking down the streets, at your mailbox or a community event.

Our Association is made up of dedicated volunteer members committed to preserve and conserve Lake Shirley's aquatic environment. The Association strives to maintain the recreational heritage of Lake Shirley through the fostering of public education, best practices, and advocacy while respecting both private and public interests.

The purpose of the Association is to preserve and protect Lake Shirley. Our efforts help to enhance water quality and to allow wildlife to flourish. Lake Shirley is currently home to eight species of fish, Bald Eagles, turtles, herons, osprey, and many others!

The LSIC holds monthly Board meetings on the second Wednesday of every month, please see the website or Facebook for time and place. We also hold an Annual Membership Meeting on the third Wednesday in May, where we invite guest speakers to educate us on wildlife, lake safety, and how to best move forward to keep our lake thriving. This fun night also allows the opportunity to meet the rest of your lake neighbors.

We ask that you help with this endeavor of lake management by contributing yearly dues to become an LSIC member, as 100% of all lake management costs for invasive weed treatment, water quality testing, and education are funded through Lake Resident donations. These can be paid by check at the address above or on our website via Paypal.

### Membership Fees

- \$300.00 yearly for owners of a single residence
- \$450.00 yearly for owners of multiple residences
- \$600.00 yearly for owners of businesses on the lake

Please join our Facebook page, visit our website, and sign up for our mailing list to keep up to date with lake news and events. There is a boat parade on the 4th of July, an annual golf tournament, a light up boat parade generally in August, and many more fun things to get involved in!

Again, welcome to the Lake Shirley community! We look forward to you falling in love with this community as much as we have. We know you'll find lake living is a great way of life and we encourage you to get involved in any way you can.

Sincerely,  
Lake Shirley Board of Directors



Visit: <http://www.lakeshirley.com/> where you can find our by-laws, a link to our Lake Shirley apparel store, lake history, Board of Directors contact information, and Environmental documents.



Follow us on Facebook!  
Share your photos and keep up with lake happenings!  
Search for "Lake Shirley Residents and LSIC"

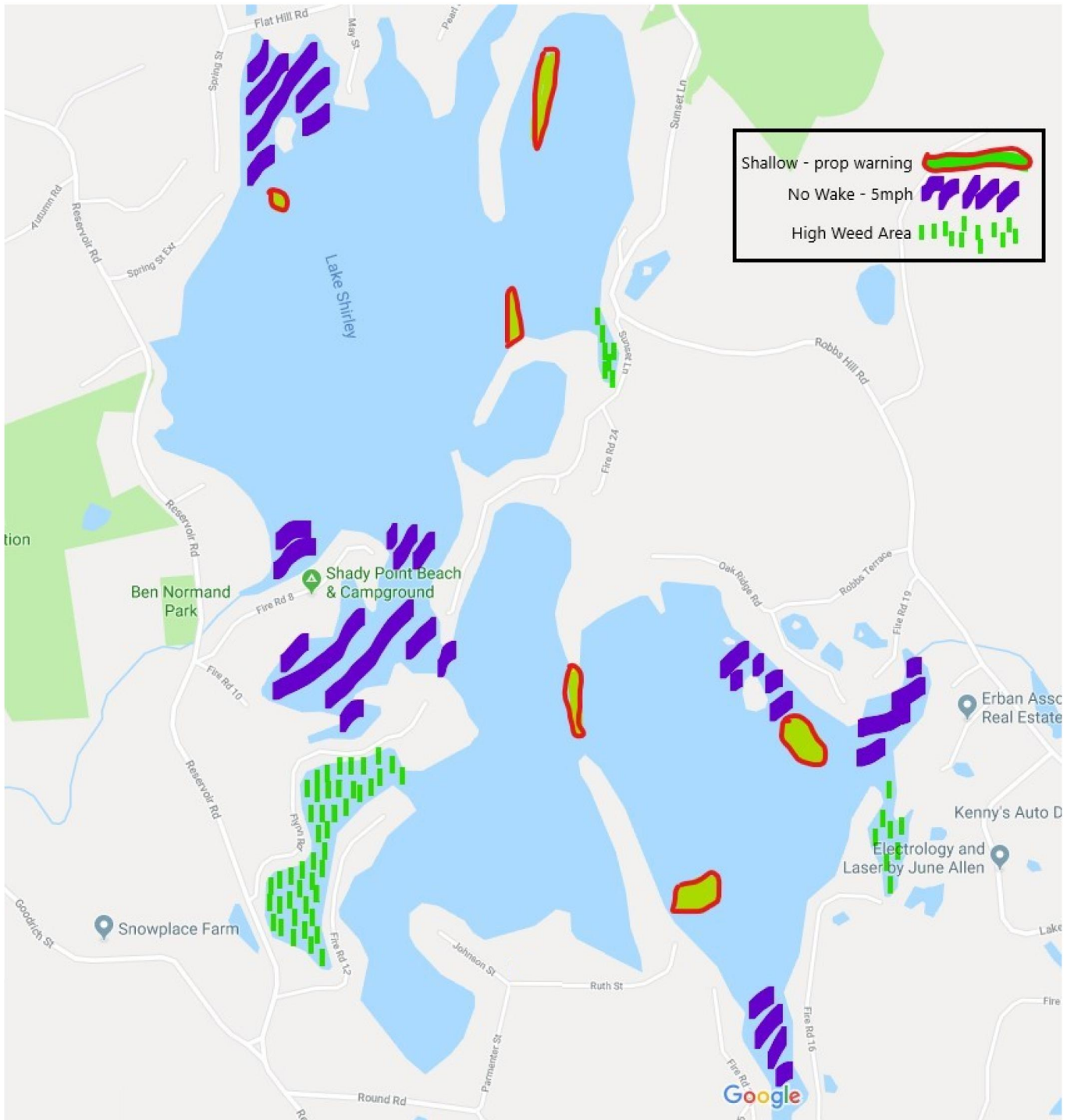
### FYI:

Our friends at Shady Point Campground (Robin and Ron Wilson) allow LSIC members to use their boat ramp annually free of charge! Be sure to thank them if you see them around.

The drawdown of the lake (4-6 feet) begins on October 15th of each year. This is the time to get your boats out for the winter. Lake is full and ready for boats by April!

Please take the time to learn boating laws and familiarize yourself with safe boating practices. We want to make sure everyone is having fun and being safe!

# Boating Awareness Map



**Lake Shirley is approximately 354 acres with almost 27 miles of shoreline, and average depth of 12-14 feet**

**Boating Allowed:** Kayaks, Canoes, Sail Boats, Electric Motor Boats, Power Boats, Jet-skis, and many other water toys!



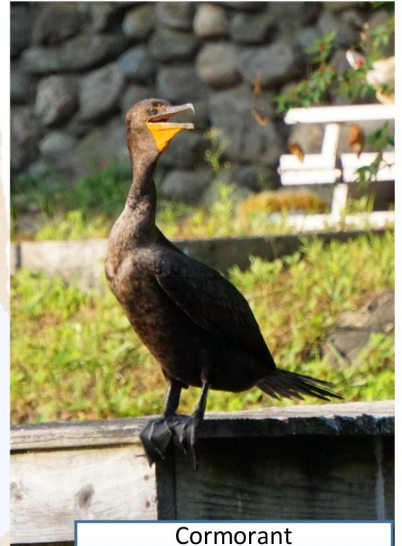
Mute Swan



Mallard



Great Blue Heron



Cormorant



American Bald Eagle

Common  
birds of  
Lake  
Shirley



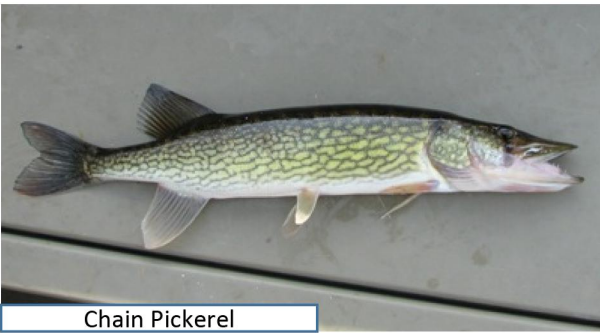
Osprey



Belted King Fisher



Canadian Goose



Chain Pickerel



Bluegill (Sunfish)



Large Mouth Bass



Hornpout/Bullhead

# Common fish of Lake Shirley



Yellow Perch



Smallmouth Bass



White Perch



Black Crappy